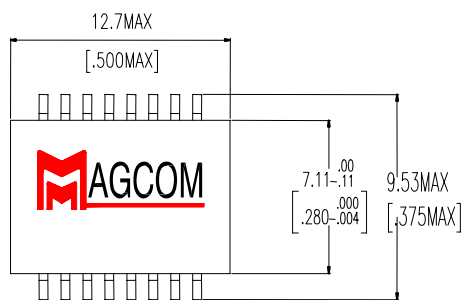


- ★ Designed to meet IEEE802.3u requirement
- ★ Primary inductance 350μH min. with 8mA DC Bias
- ★ Operating temperature range: 0°C to +70°C
- ★ Reflow Condition :Maximum reflow temperature is 250°C/-5°C, time is 20~40 sec. (Refer to IPC/ JEDEC J-STD-020C standard).

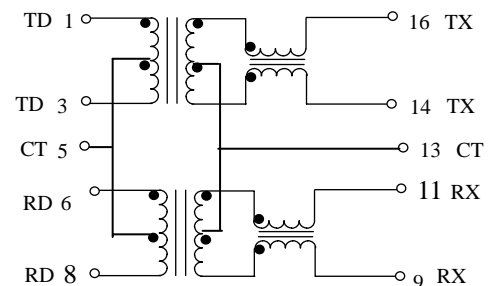
Specifications

Part Number	Turn Ratio		Insertion Loss 0.3~100MHz (dB MAX)	Return Loss (MHz)			CMRR (dB)			Hi-Pot (Vrms MIN)
	Tx	Rx		30MHz	60MHz	100MHz	30MHz	50MHz	100MHz	
HS9016	1:1	1:1	1.0	-18 dB	-16dB	-12dB	-45db	-40dB	-35dB	1500

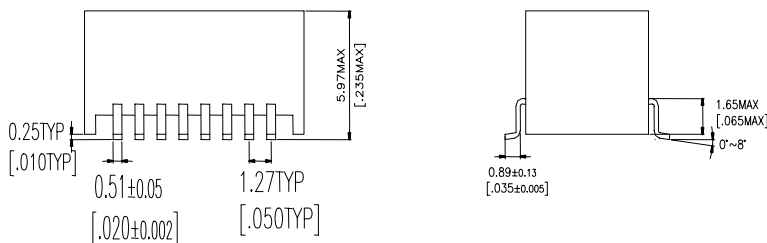
Dimension



Schematic



Marking



Remark:
 XXXXXX=PART NUMBER
 YYWW-###DATE CODE , YY=YEAR · WW=WEEK
 ###=Control Code

Data sheet subject to change without notice

Head Office & Factory

Build-B, 5F, No. 248-39, Hsing-Shen Rd., Cheng-Jeng Dist.,

Lin-Kung Proc. Zone, Kaohsiung, Taiwan, R.O.C.

TEL:886-7-8153618 Fax:886-7-8150747

sales@magcom.com.tw

(07/2010) Rev.C